



FEES+AIDS (5WEEKS)

APPLICATION FEE +
TRANSCRIPT/CERTIFICATE + TUITION +
ACCOMMODATION + FLIGHT + ACTIVITIES

+HYU ON-CAMPUS DORM & JEJU/TOKYO HOUSING + 2FLIGHTS

BOTH PARTNER/NON-PARTNER =TOTAL 5,000,000 KRW

*THE PROGRAM FEE MAY BE ADJUSTED SLIGHTLY (UP TO 5%).

HY-LION

ACTIVITIES



NETWORKING



LECTURE



2026

SUNDAY	MONDAY	TUESDAY	WEDNESDAY	THURSDAY	FRIDAY	SATURDAY
6/28 CHECK-IN	6/29 OPENING CEREMONY & OT	6/30 - 7/4 CLASS & CLUB ACTIVITIES				
7/5	7/6	7/7	7/8	7/9 - 7/11 CLASS & CLUB ACTIVITIES		
7/12	7/13	7/14	7/15 - 7/16 CLASS & CLUB ACTIVITIES		7/17 GRADUATION CEREMONY & JEJU OT	7/18
7/19 JEJU CHECK-IN	7/20	7/21	7/22 - 7/23 LECTURES & ACTIVITIES @JEJU UNIV.		7/24 FAREWELL	7/25 CHECK OUT & INDEPENDENT DEPARTURE
HY-LION 7/26 JEJU>TOKYO	7/27 WELCOME EVENT CAMPUS TOUR	7/28 - 7/29 SPECIAL LECTURE & ACTIVITIES			7/30 FAREWELL	8/1 CHECK OUT & INDEPENDENT DEPARTURE

WANT MORE INFORMATION?



WWW.HANYANGSUMMER.COM



INSTAGRAM

HANYANG INTERNATIONAL SUMMER SCHOOL 2026 HISS HY-LION

VISA



K-ETA (KOREAN ELECTRONIC TRAVEL AUTHORIZATION) OR C-3-9 OR C-3-1
*PLEASE CONFIRM WITH THE RELEVANT EMBASSY OFFICER WHICH SPECIFIC VISA NEEDS TO BE APPLIED FOR.



CONSULT THE JAPANESE CONSULATE AND CHECK YOUR ELIGIBILITY FOR VISA EXEMPTION TO JAPAN. IF YOU NEED A VISA TO ENTER JAPAN, APPLY FOR A SHORT-TERM STAY VISA IN THE COUNTRY YOU ARE CURRENTLY STAYING AT.

INSURANCE

ALL HYLION PARTICIPANTS ARE REQUIRED TO OBTAIN INTERNATIONAL TRAVEL INSURANCE THAT FULFILLS THE BELOW REQUIREMENTS. WITHOUT THE PROPER INSURANCE, STUDENTS WILL BE RESTRICTED FROM PARTICIPATING IN THE PROGRAM.

- MUST BE WRITTEN IN ENGLISH.
- MUST SUBMIT THE FULL POLICY OF THE INSURANCE.
- MUST COVER THE WHOLE PROGRAM PERIOD: 2026.06.28-08.01
- COVERAGE AREA: KOREA & JAPAN OR ASIA
- THE BENEFICIARY MUST BE THE STUDENT.

SUBMIT BY
2026/06/14



+82-2-2220-2453
SUMMERSCHOOL@HANYANG.AC.KR

ROOM 217, OFFICE OF INTERNATIONAL AFFAIRS
INTERNATIONAL BUILDING, 222, WANGSIMNI-RO,
SEONGDONG-GU
SEOUL, REPUBLIC OF KOREA 04763



SPECIAL LECTURES SUBJECT TO CHANGE AND FINALIZED CONTENTS WILL BE ANNOUNCED THROUGH HANYANGSUMMER.COM



ORIENTATION



WELCOME PARTY IN JEJU



DIVERSE HANDS-ON CLASSES



CLUB ACTIVITIES NETWORKING



CLUB ACTIVITIES



GRADUATION



CHECKLIST APPLICATION PROCESS

- SUBMIT AN ONLINE APPLICATION TO HISS (HANYANGSUMMER.COM)
- CHECK YOUR SCHOLARSHIP ELIGIBILITY
- MAKE TUITION PAYMENT FOR THE PROGRAM
- START APPLYING FOR A PROPER VISA (IF APPLICABLE)
- REGISTER FOR HOUSING
- SUBMIT PROOF OF INTERNATIONAL HEALTH INSURANCE

FEES+AIDS/PARTNER

APPLICATION 100,000+PROGRAM 3,000,000+ AIDS-1,100,000

=2,000,000 KRW

FEES+AIDS/NON-PARTNER

APPLICATION 100,000+PROGRAM 3,000,000+ AIDS-800,000

=2,300,000 KRW

ON-CAMPUS DORMITORY

ROOM TYPE: TWIN-ROOM
LOCATION: 15MIN, BY WALK

OFF-CAMPUS HOUSING

ROOM TYPE: TWIN/SINGLE
LOCATION: DETAILS COULD BE FOUND ON THE HISS WEBSITE

VISA
K-ETA (KOREAN ELECTRONIC TRAVEL AUTHORIZATION)
C-3-1 (SHORT-TERM GENERAL VISIT)
D-2-8 (SHORT-TERM STUDY VISA)

SUBMIT YOUR INSURANCE 2 WEEKS BEFORE THE PROGRAM BEGINS

- INTERNATIONAL HEALTH/TRAVEL (SUBMIT IN ENGLISH)
- KOREAN NATIONAL HEALTH INSURANCE
- GROUP INSURANCE: AROUND 25,000 KRW (LINK ON HISS WEBSITE)

HISS26

COURSES +100

KOREAN STUDIES & LANGUAGE

BEGINNING KOREAN LANGUAGE WITH K-CULTURE
INTERMEDIATE KOREAN LANGUAGE WITH K-CULTURE
INTRODUCTORY KOREAN (LEVEL 1)
INTRODUCTORY KOREAN (LEVEL 2)
KOREAN CINEMA AND MODERNIZATION
KOREAN FOOD AND CULTURE
KOREAN GRAMMATICAL STRUCTURE
KOREAN SOCIETY AND CULTURE
KOREAN WAVE AND KOREAN POPULAR CULTURE
READING IN SCIENCE FICTION
SCREEN ENGLISH
STUDIES OF KOREAN SOCIETY

BUSINESS & ECONOMICS

ADVERTISING & PROMOTION
BEHAVIOR INSIGHTS FOR INTERNATIONAL BUSINESS
BRAND WORKSHOP
CAPTURING THE ESSENCE OF OUTLIERS:
EXPLORING THE MINDS OF INNOVATIVE LEADERS
CONSUMER BEHAVIOR
EXPLORING KOREAN ENTERTAINMENT BUSINESS
FINANCIAL MANAGEMENT AND DECISION-MAKING
FINANCIAL MANAGEMENT IN ADVANCED ECONOMIES
GLOBAL BUSINESS COMMUNICATION
GLOBAL ENTREPRENEURSHIP:
LAUNCH YOUR STARTUP
INTERNATIONAL BUSINESS
INVESTMENT IN ADVANCED ECONOMIES
MANAGERIAL ACCOUNTING: DECISION-MAKING PERSPECTIVE
STRATEGIC MANAGEMENT

ENGINEERING & IT

AI BASIC
COMPUTER NETWORKS
CREATIVE COMPUTING FOR ENGINEERING STUDENTS (PYTHON)
DIGITAL DESIGN STUDIO
HEAT TRANSFER
MARKETING FOR ENGINEERS
MICROPROCESSOR AND LO T
MOBILE APP PROGRAMMING
NUMERICAL ANALYSIS
PROJECT MANAGEMENT

ACADEMIC
3CREDITS (45 CONTACT HOURS)

INTERNATIONAL STUDIES & MATHEMATICS

EAST ASIAN LANGUAGES AND CULTURES
EAST ASIAN POLITICAL ECONOMY
INTERNATIONAL RELATIONS
INTERNATIONAL RELATIONS IN EAST ASIA
KOREA AND JAPAN IN THE WORLD



CALCULUS 1

ENGINEERING MATHEMATICS 1&2

E-SPORTS/ARTS/SPORTS

ART OF SELF DEFENSE (TAEKWONDO)
BADMINTON
DANCE SPORT
EXPLORING POP MUSIC
KOREAN BEAUTY AND MAKEUP
KOREAN LANGUAGE AND CREATIVE DANCE WORKSHOP
KOREAN POP DANCE
KOREAN TRADITIONAL FAN DANCE
KOREAN TRADITIONAL SOGO DANCE
PILATES
WEIGHT TRAINING
TENNIS
TABLE TENNIS



SOCIAL STUDIES & COMMUNICATIONS

AI ETHICS AND SOCIETY
CROSS CULTURAL DOCUMENTARY RESEARCH & PRODUCTION IN KOREA
ENVIRONMENTAL ISSUES IN KOREAN & NORTH AMERICAN CINEMA
HEALTH, ENVIRONMENT, LIFESTYLE AND PRESERVE EARTH (HELP)
INTERACTIVE MEDIA PERFORMANCE
MOBILE STORYTELLING AND SOCIAL MEDIA
MULTIMEDIA MARKETING AND CONTENT DESIGN
SEMINAR: MEDIA INDUSTRY IN KOREA
SUSTAINABLE DEVELOPMENT AND GENDER
UNDERSTANDING OF DEVELOPMENT COOPERATION

ELECTIVE
1-3CREDIT (14-45 CONTACT HOURS)

COURSE GUIDELINES

COURSE SCHEDULE: MONDAY ~ FRIDAY (15 CLASS DAYS TOTAL)
STUDENTS CAN CHOOSE UP TO 3 COURSES AND EARN UP TO 9 CREDITS
*SOME COURSES ARE TENTATIVE AND SUBJECT TO CHANGE

CLASS HOUR: 15 HOURS PER CREDIT
ACADEMIC COURSES: 3 CREDITS / ELECTIVE COURSES: 1-3 CREDIT(S)
FULL COURSE LISTS CAN BE FOUND ON OUR WEBSITE!



DAY 9:00-12:00
NOON 13:00-16:00
NIGHT 16:00-19:00



SEOUL
06-28-2026

JEJU
07-19-2026

TOKYO
07-27-2026

5,000,000 KRW

APRIL 30, 2026
APPLICATION/PAYMENT
(ONLY 100 SPOTS)

JUNE 28, 2026
HYU CHECK-IN

JULY 19, 2026
JEJU CHECK-IN

JULY 26, 2026
TOKYO ARRIVAL

AUG 01, 2026
CHECK OUT

HISS

MAY 23, 2026
APPLICATION/PAYMENT

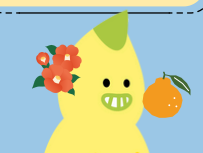
JUNE 28, 2026
HYU ARRIVAL

PARTNER
=2,000,000 KRW

JULY 19, 2026
JEJU CHECK-IN

NON-PARTNER
=2,300,000 KRW

JULY 25, 2026
JEJU CHECK-OUT



DETAILED SCHEDULES ARE TENTATIVE AND SUBJECT TO CHANGE, AND WILL BE FINALIZED BY EARLY NOVEMBER, 2026.

*THE PROGRAM FEE MAY BE ADJUSTED SLIGHTLY (UP TO 5%).